



## 100% AUSTRALIAN OWNED AND OPERATED

Designed and tested in Australia. The Trailer Safe Global warning device has been tested with over 1000 successful pin ups. We plan to continue innovating our products into the future.

Trailer Safe Global Pty Ltd is 100% Australian owned and operated.



### TRAILER SAFE GLOBAL PTY LTD

☎ 1300 898 142

✉ admin@cranemech.com.au

🌐 www.cranemech.com.au



# Trailer Coupling Safety Systems

**Trailer Coupling Safety Systems**



**1300 898 142**  
www.cranemech.com.au



## OVERVIEW

The Trailer Safe Global coupling system has been developed to increase safety and reduce costs related to trailer drops in the transport industry. The focus on safety is an important one with increased pressure from regulatory authorities. It is vital to ensure that safeguards are implemented to reduce the risk of damage to property and to increase public safety. The team at Trailer Safe Global are passionate about safety and innovation. Our core goal is to eliminate the risk of trailer drops through complacency.



## BENEFITS

- Increased public safety in the workplace and on the road.
- Reduced costs and insurance claims in repairing damaged trucks, trailers and other assets.
- Increase in revenue through minimizing truck and trailer downtime through damage.
- Safeguards against unknown trailer tampering.
- Increases driver confidence.
- Can be retrofitted to most compatible turntables.



## PRIME MOVER DEVICE

Managed by two proximity sensors on the turntable and a control box inside the prime mover's dashboard. The driver will be notified of the status of the coupling by lights on the dashboard near the steering wheel; green (successful) / red (unsuccessful) or through the vehicles instrument cluster with wording to the effect of pinned or unpinned. In the case of a unsuccessful pin up an alarm and red light will alert the driver to try again.

## A TRAILER / DOLLY DEVICE

This device is the same as the prime mover device however the electronics are contained within a waterproof box mounted to the outside of a tool box or on the trailer chassis. The green light (successful coupling) and the red light (unsuccessful coupling) are mounted and positioned on the driver's side of the front of the trailer for easy visual confirmation of coupling by the driver.

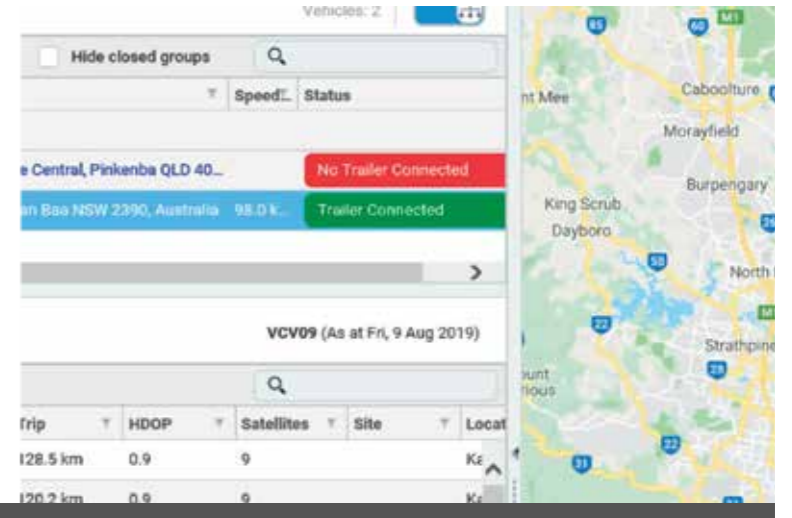
Both devices can be integrated into GPS trackers, allowing fleet controllers to view successful trailer connection on their computer or mobile device.



## GPS TRACKING

The prime mover device can be integrated into compatible GPS tracking systems. This allows Fleet Controllers to remotely view and report on successful trailer connection on their computer or mobile device.

If trailers are fitted with their own compatible GPS tracking system, the device can also be integrated so Fleet Controllers can view and report on successful/unsuccessful trailer connections.



## INSTALLATION

Installation is carried out by our team of accredited installers and takes approximately three hours to complete on a prime mover.

Our system can be retrofitted to most prime mover dashboards, either using switch blanks or a custom mounting bracket.

Turntables and hitches are not compromised in any way by the installation of the device. There is no welding or drilling done to the turntable or any modifications which affect the original equipment in any way.

